

Interactive Drawings

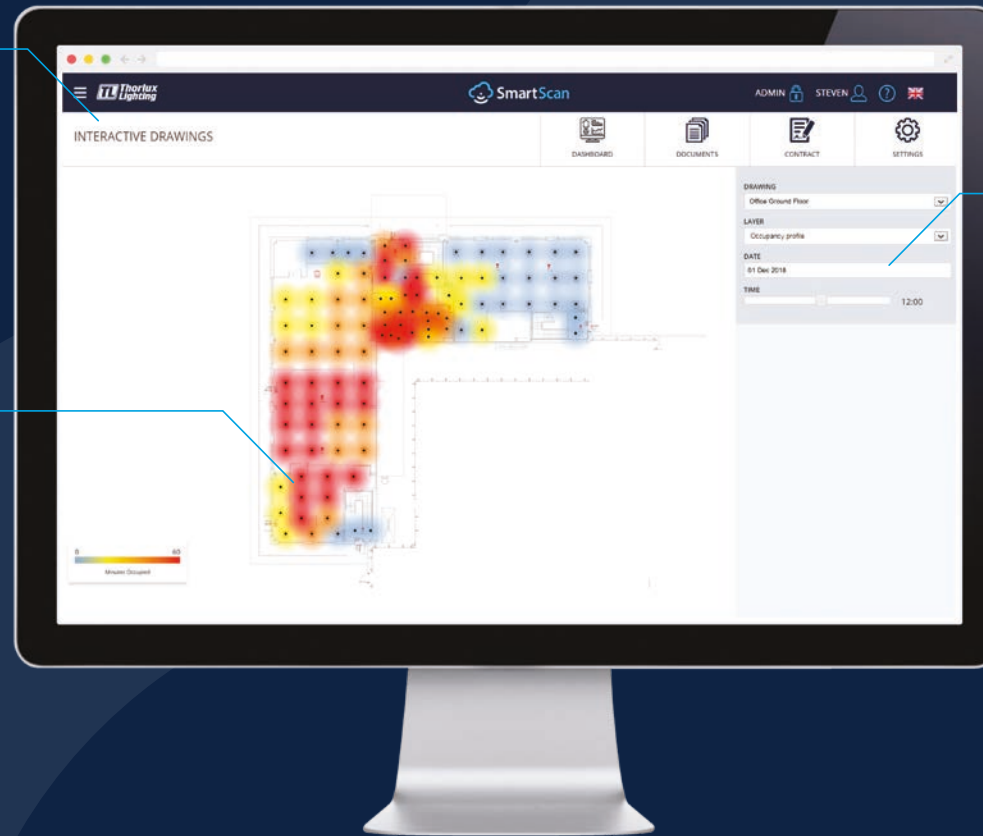
SmartScan Interactive Drawings provide a simple and effective method of viewing system information.

Navigation

Each dataset is shown as a layer allowing the user to zoom in or out as needed. The user can look at data for the whole building, or focus attention on a single room or individual luminaire.

Occupancy Profile

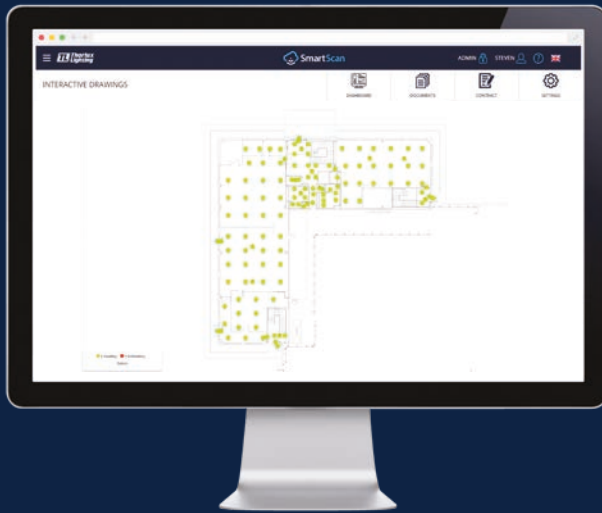
The occupancy profile for each sensor is displayed by a range of colours from grey (no occupancy) through to red (occupied continuously throughout the selected hour).



Information Table

If a single luminaire is selected, an information table is displayed with the data for that luminaire.

The user can select a date, then using the time slider can see how the usage pattern or performance changes through the day.



Status

If a luminaire requires attention the exact position is highlighted on the Interactive Drawing. The Information table will show the status of electronic components within the luminaire.



Energy Savings

Daily energy savings are shown by a graduated indicator – the darker the green, the greater the energy saving that day. If a single luminaire is selected, the information table shows the energy performance for that luminaire.



Air Quality Sensing

Temperature, humidity and CO₂ levels are displayed with colour-coded shading. The information table displays the exact values for each sensor at any given time.